



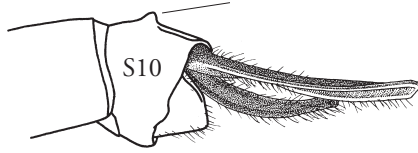
S9
S10

358 *A. serrata* ♂

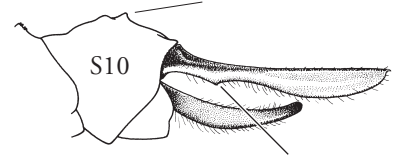


S9
S10

359 *A. cyanea* ♂



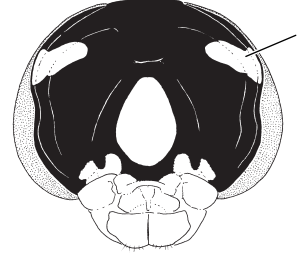
360 *Aeshna viridis* ♂



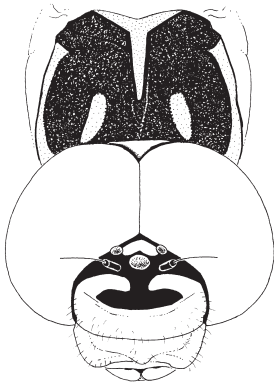
361 *Aeshna affinis* ♂



362 *Aeshna cyanea* ♂



363 *Aeshna viridis*



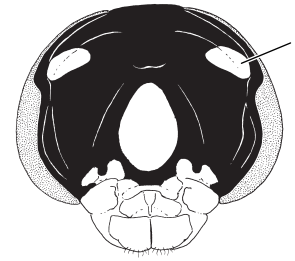
364 *Aeshna affinis*



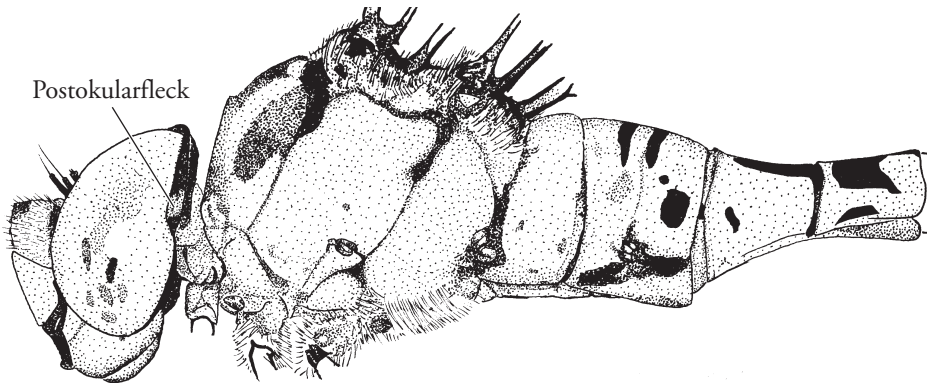
365 *Aeshna viridis*



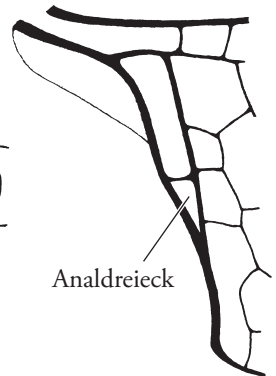
366 *Aeshna cyanea*



367 *Aeshna cyanea*

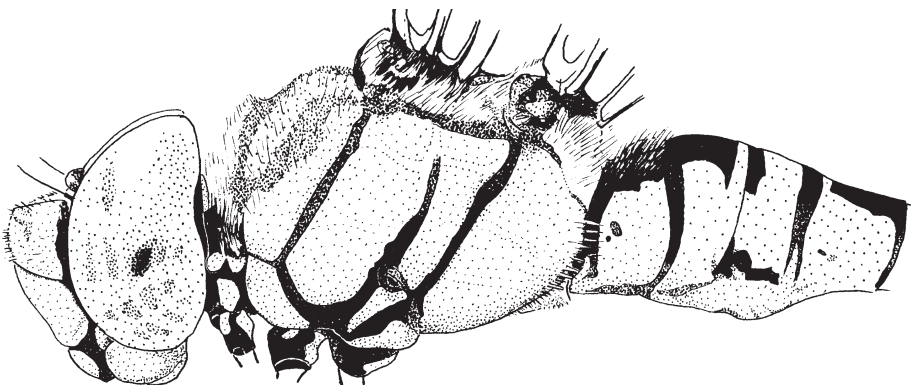


368 *Aeshna viridis*

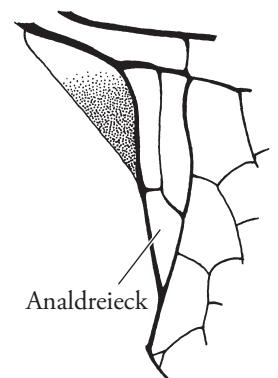


Analdreieck

369 *Aeshna viridis* ♂



370 *Aeshna affinis*



Analdreieck

371 *Aeshna affinis* ♂